



# FRANÇOIS & THE ATLAS MOUNTAINS

## *Plaine Inondable*

1. Friends 2. Be Water 3. Wonder 4. Moitïe 5. Remind  
6. Do You Do 7. Otages 8. Nights = Days 9. Years Of Rain 10. Pic-nic

**RELEASE DATE:** 7<sup>th</sup> December 2009

**FORMAT:** CD

**LABEL:** FENCE RECORDS

**CAT #:** FNC 810

*A stunning collection of Gallic chamber-pop, sailing around the coast of Africa ...*

Meet **François Marry** - a multi-talented songwriter, musician, animator and artist, hailing from Saintes, a small town on the west coast of France. François is the latest signing to **Fence Records** - a DIY micro-indie label run by **King Creosote** and **The Pictish Trail** from the sleepy fishing village of Anstruther, in Fife.

At the age of 19, François travelled over to the UK, and quickly became involved in the Bristol scene, joining the line-ups of **Movietone** (Domino) and **Crescent** (FatCat). After a few months he started playing a number of his own shows, garnering notable support slots (including **Juana Molina**, **Gravenhurst**, **Patrick Wolf**, **Panda Bear**, **Electrelane**) and assembling an ever-changing band of players called '**The Atlas Mountains**' - whose cast has included **Rachael Dadd** (Angel's Egg), and fellow **Fence Records** artist **Rozi Plain**. Through Rozi, François was introduced to Fence Records, and has since performed at a number of Fence Collective events - including the label's **Homegame** festival, in April.

Over the past few years, François has recorded a couple of albums and EPs, released through **Too Pure** and Bristol's **Stitch Stitch**, and has performed around the globe with his own band, as well as being a touring member of Scottish indie-pop starlets **Camera Obscura** (4AD), on trumpet and percussion.

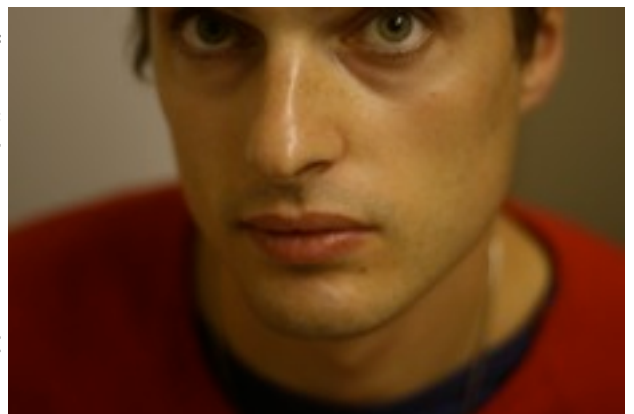
For his third full length album, François returned to the comforts of his hometown, and recruited members of local friends **Unkle Jelly Fish** and **Bost Gehio** (an all-female polyphonic vocal group from the Basques country) to be his 'Atlas Mountains'. **Plaine Inondable**, (which translates as 'Flood Plains') refers to the town's winter landscape - where the Charente river often bursts its bank, completely covering the surrounding fields.

François' previous releases often featured casio-beats, and lo-fi electronics - but *Plaine Inondable* marks a departure from that style. Here, piano chords swell, electric guitars gently shimmer, and François' soft croon floats throughout - his bilingual songs melding the bitter-sweet yearning of **Leonard Cohen** with the melodic playfulness of **Serge Gainsbourg** and **Françoise Hardy**.

The album also takes inspiration from recent compilations of African music recorded in the 1970's (**Ethiopiquest**, **Mali 70**) released by various European labels. The atmospheric rhythms and percussive elements, as well as some guitar parts and scales, absorb this influence:

*"Be Water' is built on a Ethiopian scale called Tezeta, the guitar on 'Remind' is inspired by the style of Ali Farka Toure and Group Doueh"*

The result is a confident and unique blend of styles, that dreamily infuse with one another; a semi-conscious state, which is further reflected in the fluctuation between French and English lyrics.



You can catch François on tour in the UK, with support from **Balky Mule** (Fat Cat) from mid-November. Check [www.fencerecords.com](http://www.fencerecords.com) for details.

For more information, interviews, guestlists contact Johnny Lynch at Trailer Park Press  
e: [johnny@trailerparkpress.com](mailto:johnny@trailerparkpress.com), t: 01333 313 842, m: 07793811907, a: 6 James Street, Cellardyke, Fife, KY10 3AY